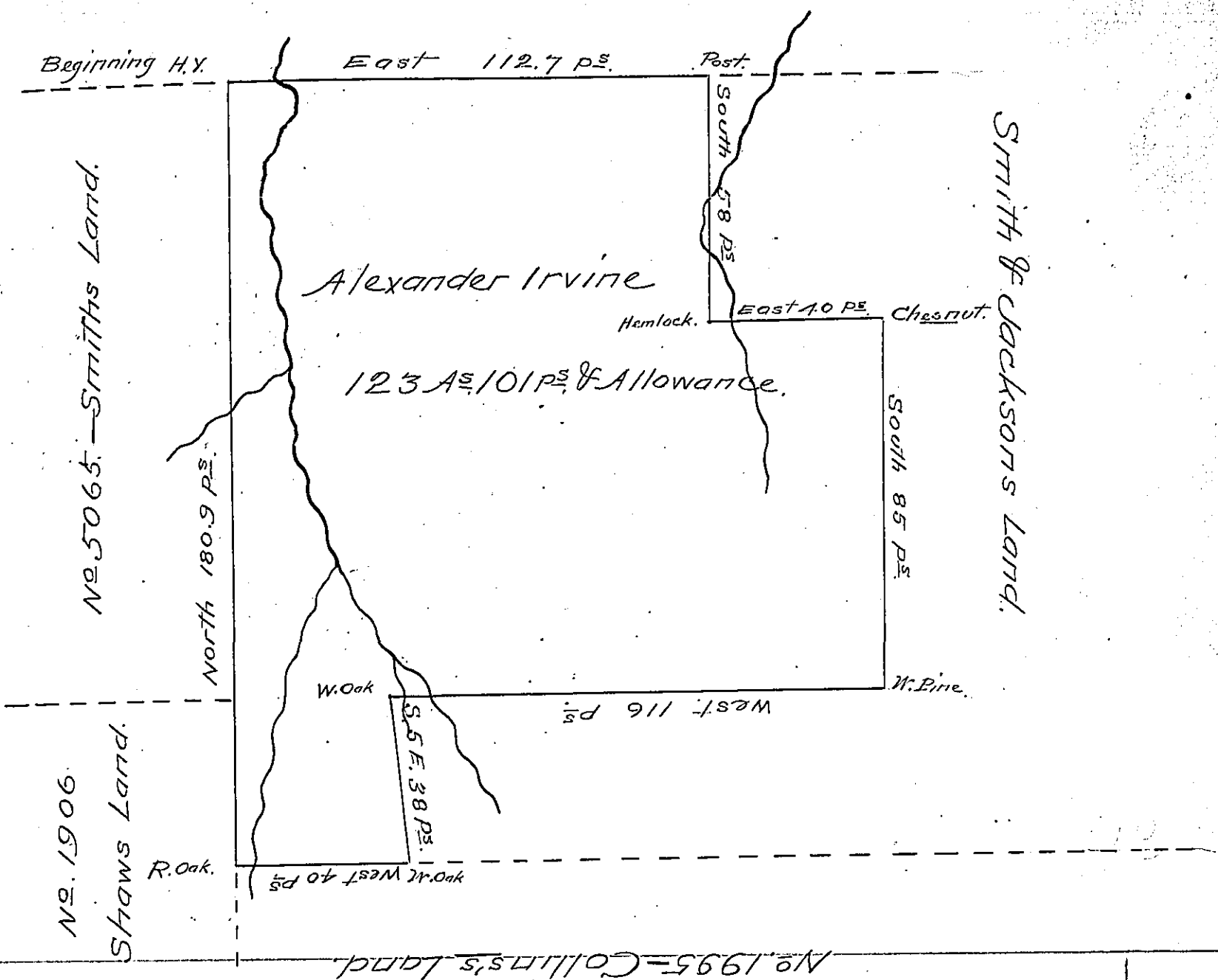


— Witmores Land.



SITUATE in Lawrence Township Clearfield County & State of Pennsylvania Surveyed March 4<sup>th</sup> 1829  
 In pursuance of a Warrant dated February 16<sup>th</sup> 1829 for 150 A. Containing 123 A. & 101 perches & allowance of six P. Cent for Roads &c.

Jos. Turner D.S.

Gab<sup>l</sup> Hiester Esq. S. G.

IN TESTIMONY that the above is a copy of the original remaining on file in the Department of Internal Affairs of Pennsylvania, made conformably to an Act of Assembly approved the 16th day of February, 1833, I have hereunto set my Hand and caused the Seal of said Department to be affixed at Harrisburg, this sixteenth day of May 1905.

*Lucas B. Pearson*  
 Secretary of Internal Affairs.